

# Mundelein

**We focus on heading, thread turning, torque-feature installation and finishing of internally threaded fasteners.**

Supplier of over  
**500,000,000**  
internally threaded  
fasteners per year

Key Products

Clinch-Lok

Step-Lok

Sta-Tite

Prevailing Torque Nuts

Cold Formed Specials



**MacLean-Fogg**  
COMPONENT SOLUTIONS

**Who we are**

MacLean-Fogg began with one product, the No. 1 Railroad Locknut. The long, rich tradition of fasteners at MacLean-Fogg is centered at our Mundelein, IL facility.

**What we do**

We manufacture over 500,000,000 internally threaded fasteners per year for Automotive, Heavy Duty and other industrial markets.

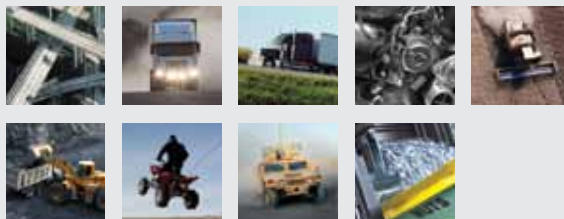
**Key Products**

Clinch-Lok  
Step-Lok  
Sta-Tite  
Prevailing Torque Nuts  
Cold Formed Specials



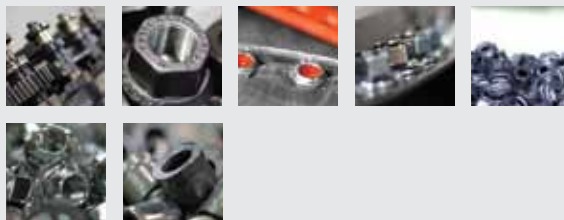
**Industries Served**

Automotive  
Heavy-Duty Truck  
Heavy-Duty Trailer  
Industrial Engine  
Agriculture  
Off Highway  
Recreational Vehicles  
Military and Defense  
Industrial Solutions



**Core Competencies**

Cold Heading  
Thread Tapping  
Nylon Insert Assembly and Crimping  
Deflection/Staking  
Ability to support a wide range of coatings  
Manufacturing of aluminum fasteners as well as other non-standard materials  
Ability to design and manufacture non-standard "specials"



**Member Organizations**



© Copyright 2012, MacLean-Fogg Component Solutions. MacLean-Fogg Component Solutions, the MacLean-Fogg Component Solutions logo, Clinch-Lok, Step-Lok and Sta-Tite are trademarks of MacLean-Fogg Company.